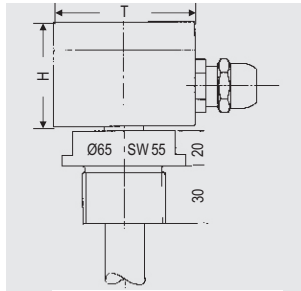


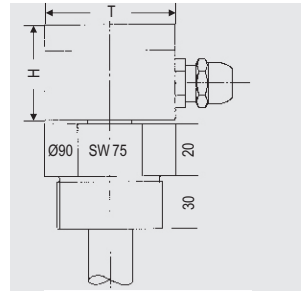
Priključne kutije montirane na spoljnu stranu zavrtnja

Connection boxes mounted on external screw union



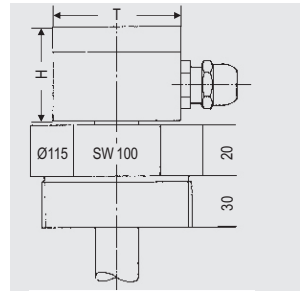
Tip / Type

RMS-VPP(VPE)-A1½"-AA(PO) = cev zavrtnja
Screw pipe
RVA-VPP(VPE)-A1½"-AA(PO) = cev zavrtnja
Screw pipe



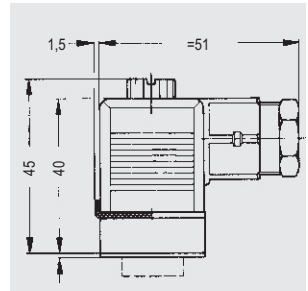
Tip / Type

RPV-VPV-A2"-AA(PO) = cev zalepljena
Pipe glued
RPP-VPP-A2"-AA(PO) = cev zavrtnja
Screw pipe
RPT-VPT-A2"-AA(PO) = cev pod sponom
Pipe clamped
RPE-VPE-A2"-AA(PO) = cev zalemljena
Pipe welded

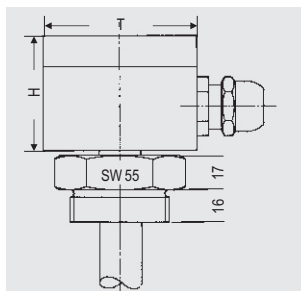


Tip / Type

RPV-VPV-A3"-AA(PO) = cev zalepljena
Pipe glued
RPP-VPP-A3"-AA(PO) = cev zavrtnja
Screw pipe
RPT-VPT-A3"-AA(PO) = cev pod sponom
Pipe clamped
RPE-VPE-A3"-AA(PO) = cev zalemljena
Pipe welded

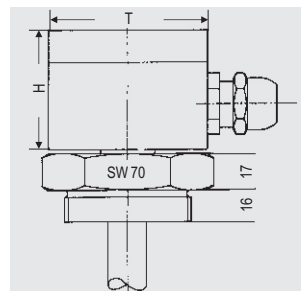


Utikac / Connection Plug



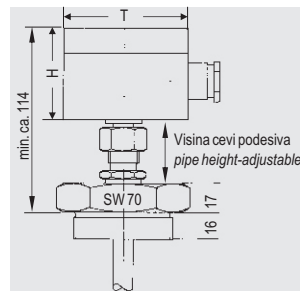
Tip / Type

RMS-VMS-A1½"-AA(PO) = cev zavarena
Pipe brazed
RVA-VMS-A1½"-AA(PO) = cev zavrtnja
Screw pipe
RMS-VVA-A1½"-AA(PO) = cev zavrtnja
Screw pipe
RVA-VVA-A1½"-AA(PO) = cev zalemljena
Pipe welded



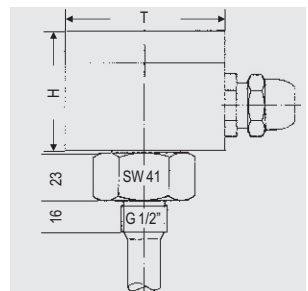
Tip / Type

RMS-VMS-A2"-AA(PO) = cev zavarena
Pipe brazed
RVA-VMS-A2"-AA(PO) = cev zavrtnja
Screw pipe
RMS-VVA-A2"-AA(PO) = cev zavrtnja
Screw pipe
RVA-VVA-A2"-AA(PO) = cev zalemljena
Pipe welded



Tip / Type

RMS-VMS-A2"-AA(PO)-V } = obezbedjeno
RVA-VMS-A2"-AA(PO)-V } Spojem cevi
RMS-VVA-A2"-AA(PO)-V
RVA-VVA-A2"-AA(PO)-V



Tip / Type

RMS-VMS-A½"-AA(PO) = cev zavarena
Pipe brazed
RVA-VMS-A½"-AA(PO) = cev zavrtnja
Screw pipe
RMS-VVA-A½"-AA(PO) = cev zavrtnja
Screw pipe
RVA-VVA-A½"-AA(PO) = cev zalemljena
Pipe welded

Dimenzije fasunga konektora u mm / Dimensions connector socket HxWxD in mm

Broj klema / No. of clamps	do / up to 6	do / up to 12	do / up to 18	preko / over 18
Aluminijum / Aluminum	54x80x75	54x125x80	54x175x80	54x175x80
Poliester / Polyester	55x80x75	55x110x75	55x160x75	55x190x75

Elektricne veze / Electrical Connections

Promenljiva veza / Change-over contact			NO/NC/Öfner NO/NC				
Kontakt br.	kutija spojnice lme sponge	nepovezani deo kabla boja kabla	kutija spojnice lme sponge	nepovezani deo kabla boja kabla			
Contact No.	Connection box Clamp name	Unconnected cable end Cable colour	Connection box Clamp name	Unconnected cable end Cable colour			
K1	crvena / red cma / black zuta / yellow	2	1	2	bela / white braon / brown		
		3				bela / white braon / brown zeleno / green	
K2	crvena / red scma / black zuta / yellow	4	3	4	zeleno / green zuta / yellow		
		5				siva / grey roze / pink	
		6				plava / blue crvena / red cma / black	
K3	crvena / red cma / black zuta / yellow	7	5	6	siva / grey roze / pink		
		8				plava / blue crvena / red	
		9				cma / black ljubicasta / violet	
K4	10	11	7	8	plava / blue crvena / red		
						12	13
						14	14
K5	13	14	9	10	cma / black ljubicasta / violet		
						15	11
						12	12
K6	13	14	11	12	cma / black ljubicasta / violet		
						13	14
K7	13	14	13	14	cma / black ljubicasta / violet		
						14	14

Legenda / Legend

Dimenzije u mm / Dimensioning in mm

RMS = Mesingana cev / Brass pipe
RVA = nerdjajuci celik / Stainless steel pipe
RPE = PE-cev / PE pipe
RPP = PPH-cev / PPH pipe
RPT = cev od nerdj. Celika, obložena PTFE /
Stainless steel pipe, PTFE-coated
RPV = PVC-cev / PVC pipe

VMS = Mesingani spoj / Brass union
VVA = spoj od nerdjajuceg celika 1.4571 /
Stainless steel union 1.4571

VPE = PE-spoj / PE union
VPP = PPH-spoj / PPH union
VPT = PTFE-spoj / PTFE union
VPV = PVC-spoj / PVC union

A1½" = navoj G1½" za spoljasnju montazu /
Thread G1½" for external assembly
A2" = navoj G2" za spoljasnju montazu /
Thread G2" for external assembly
A3" = navoj G3" za spoljasnju montazu /
Thread G3" for external assembly

AA = Aluminijumska kutija / Aluminum box
PO = Poliester kutija / Polyester box

V = podesivo / Adjustable

Moguće izmene bez prethodne najave.

Subject to change without prior notice, errors excepted.