

BEZBEDNOŠNA TEHNOLOGIJA
ZA ZAŠTITU ŽIVOTNE SREDINE

SAFETY AND
ENVIRONMENTAL
TECHNOLOGY

E.L.B.
FÜLLSTANDSGERÄTE

11-01-03E

**Instrumenti za merenje nivoa tecnosti
Tip TK-307
Nerdjajući celik 1,4571**

**Liquid Level Measuring Instruments
Type TK-307
Stainless steel 1.4571**

**Tehnicki podaci
Tip TK-307**

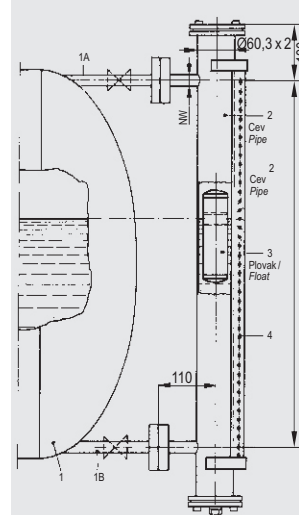
Spoj	Aluminijumsko kusište V30xS50xP45mm
	Poliester-kutija V55xS80xP75mm
Sistem zaštite EN 60529	IP 65 kutija/utikac
Dužina cevi	Max. 6000 mm
Operativna temperatura	Max. 130 °C
Rezolucija	7,5mm, 10mm, 15mm, 20mm ili 1%, 2%, 5% u zavisnosti od modela
Uredjaj	2 spone creva
Dodaci	R/I transducer TK-100 Vidite odeljak 14-01-01E

**Technical Data
Type TK-307**

Connector	Aluminum casing H30 x W50 x D45 mm
	Polyester box H55 x W80 x D75 mm
Sys. protection EN 60529	IP 65 box / plug
Pipe length	max. 6000 mm
Operating temperature	max. 130 °C
Resolution	7,5 mm, 10 mm, 15 mm, 20 mm or 1 %, 2 %, 5 % dep. on model
Fixture	2 hose clamps
Accessories	R/I Transducer TK-100 see folder 14-01-01-E

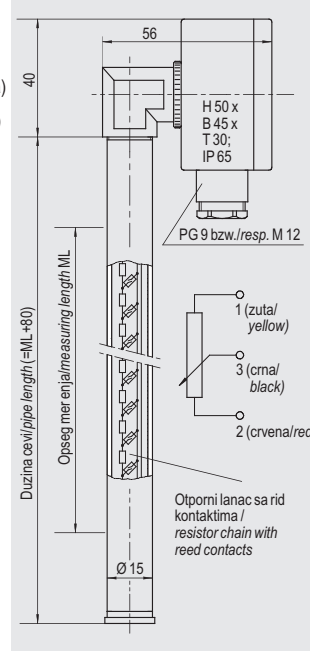
**Dimenzioni crtez
Dimensional Drawings**

TK-307
primer ugradnje /
Example of mounting



Indikator zaobilaznice, npr.. MKL 3
Bypass indicator, e.g. MKL 3

TK-307



Dimenzije u mm / Dimensioning in mm

**Kljuc tipa
Tip TK-307**

**Type Key
Type TK-307**

Osnovne oznake (VA cev Ø15mm) / Basic designation (VA pipe Ø 15 mm)

Veza / Connection
bez indikacija = alumin. kuciste / without indication = Aluminum box
PO = Poliester kutija / Polyester box
SI = ___mm kabl Silikon (standardni 1000mm) /
___mm cable Silicone (standard 1000 mm)

Duzina cevi u mm / Pipe length in mm
R = ___mm

Rezolucija / Resolution

7,5 = 7,5 mm
10 = 10 mm
15 = 15 mm
20 = 20 mm

1% = 1% (izlaz 4...20 mA postavljen u kutiji spoja od poliestera ili aluminijuma)
(outlet 4...20 mA set in AA box)
2% = 2% (izlaz 4...20 mA postavljen u kutiji spoja od poliestera ili aluminijuma)
(outlet 4...20 mA set in AA box)
5% = 5% (izlaz 4...20 mA postavljen u kutiji spoja od poliestera ili aluminijuma)
(outlet 4...20 mA set in AA box)

TK307



KONTINUIERLICHE TAUCHSONDEN • CONTINUOUS IMMERSIBLE PROBES



Instrumenti za merenje nivoa tecnosti

Tip TK-308

PE, PPH, PVC

Liquid Level Measuring Instrument

Type TK-308

PE, PPH, PVC

Tehnicki podaci

Tip TK-308

Spoj	Vidite podatke kutije
Sistem zastite EN 60529	IP 65 kutija/utikac IP 55 kabl
Tip plovka	11 (tip 15, 17)
Kabl	1000mm LiYY 0.5mm ² ili silikon 0.5mm ²
Duzina cevi	Max. 6000 mm
Operativna temperatura	PVC: Max. 60°C PE: max. 80°C PP: max. 90°C
Operativni pritisak	Max. 6 bar
Gustina tecnosti	Tip 11: 0.60 g/cm ³ Tip 15: 0.59 g/cm ³ Tip 17: 0.63 g/cm ³
Rezolucija	7,5mm, 10mm, 15mm, 20mm ili 1%, 2%, 5% u zavisnosti od modela
Dodaci	R/I transdaktor TK-100 Vidite odeljak 14-01-01E

Technical Data

Type TK-308

Connector	see box data
Sys. of protection EN 60529	IP 65 box/plug IP 55 cable
Float type	11 (15, 17)
Cable	1000 mm LiYY 0,5 mm ² or Silicone 0,5 mm ²
Pipe length	max. 6000 mm
Operating temperature	PVC: max. 60 °C PE: max. 80 °C PP: max. 90 °C
Operating pressure	max. 6 bar
Media density	type 11: 0.60 g/cm ³ type 15: 0.59 g/cm ³ type 17: 0.63 g/cm ³
Resolution	7,5 mm, 10 mm, 15 mm, 20 mm or 1 %, 2 %, 5 % dep. on model
Accessories	R/I Transducer TK-100 see folder 14-01-01-E

Kljuc tipa

Tip TK-308

Type Key

Type TK-308

Osnovne oznake / Basic designation

Materijal spoja cevi i zavrtnja / Material of pipe and screw union
PE = polietilen / Polyethylene
PP = polipropilen / Polypropylene
PV = polivinilchlorid / Polyvinylchloride

Navoj / Thread

I1" = G 1" za unutrašnju montažu / G 1" for internal assembly
A1" = G 1" za spoljašnju montažu / G 1" for external assembly
A2" = G 2" za spoljašnju montažu / G 2" for external assembly
A3" = G 3" za spoljašnju montažu / G 3" for external assembly

Dizajn / Design

bez indikacije / without indication = fiksni / fixed
V = podesiv (samo sa spoljašnjim navojem) /
adjustable (only with external thread)

Modeli plovka / Float models

11 = cilindar, PE 78mmØ / cylinder PE 78 mm Ø
15 = cilindar, PP 78mmØ / cylinder PP 78 mm Ø
17 = cilindar, PVC 78mmØ / cylinder PVC 78 mm Ø

Veza / Connection

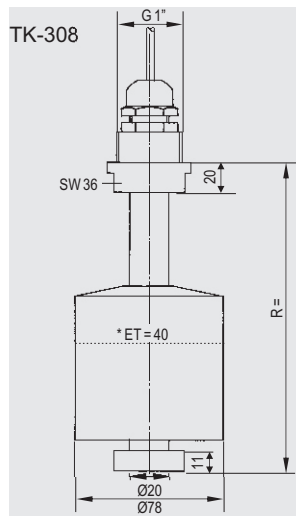
PO = Kutija od poliestera / Polyester box
AA = Kutija od aluminijuma / Aluminum box
ST = trostruki ili šestostruki adapter / triple adaptor
LY = ___ mm = kabl LiYY (standardni 1000mm)
___ mm cable LiYY (standard 1000 mm)
SI = ___ mm = kabl Silikon (standardni 1000mm)
___ mm cable Silicone (standard 1000 mm)

Duzina cevi u mm / Pipe length in mm
R = ___ mm

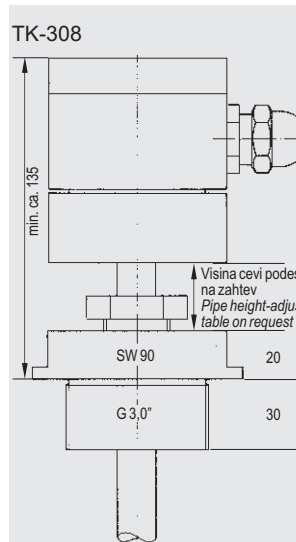
Rezolucija / Resolution

7,5 = 7,5 mm
10 = 10 mm
15 = 15 mm
20 = 20 mm
1% = 1% (izlaz 4...20 mA postavljen u kutiji spoja od poliestera ili aluminijuma)
(outlet 4...20 mA set in PO or AA box)
2% = 2% (izlaz 4...20 mA postavljen u kutiji spoja od poliestera ili aluminijuma)
(outlet 4...20 mA set in PO or AA box)
5% = 5% (izlaz 4...20 mA postavljen u kutiji spoja od poliestera ili aluminijuma)
(outlet 4...20 mA set in PO or AA box)

TK308



TK-308



*Dubina uranjanja pri gustini 1
Immersion depth at density 1

Dimenzije u mm / Dimensioning in mm

TK-308

Moguće izmene bez prethodne najave.

Subject to change without prior notice, errors excepted.